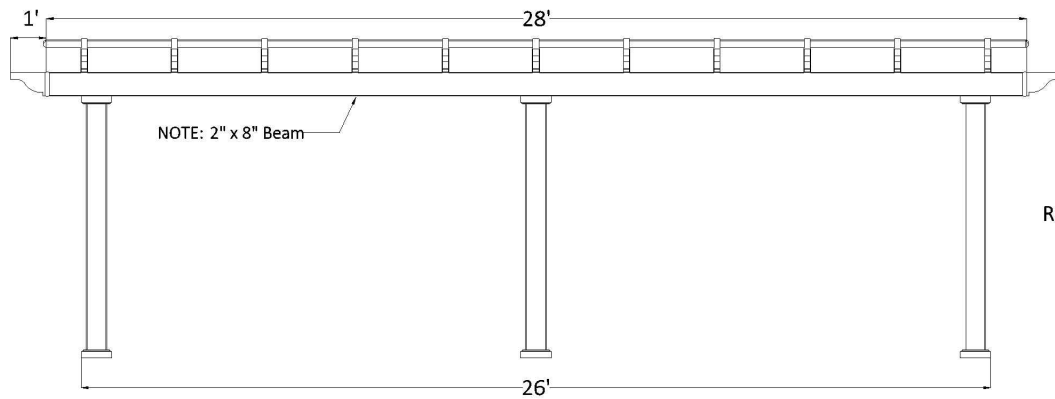
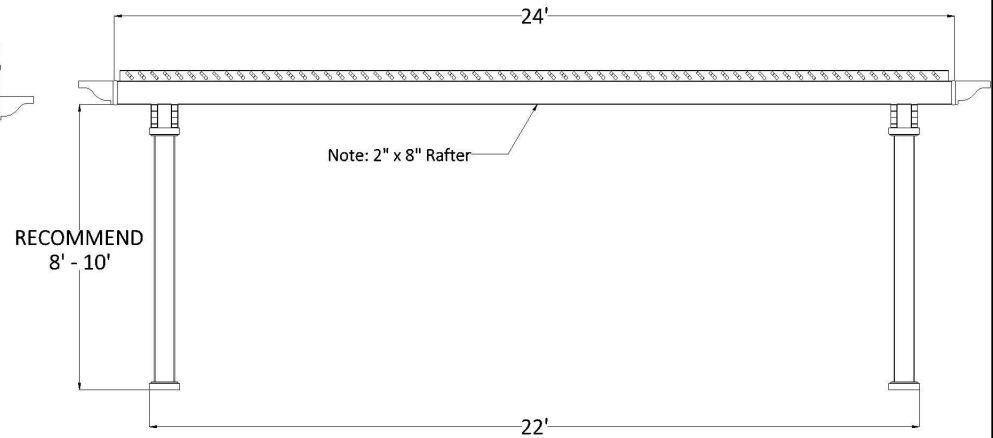


FRONT ELEVATION



SIDE ELEVATION



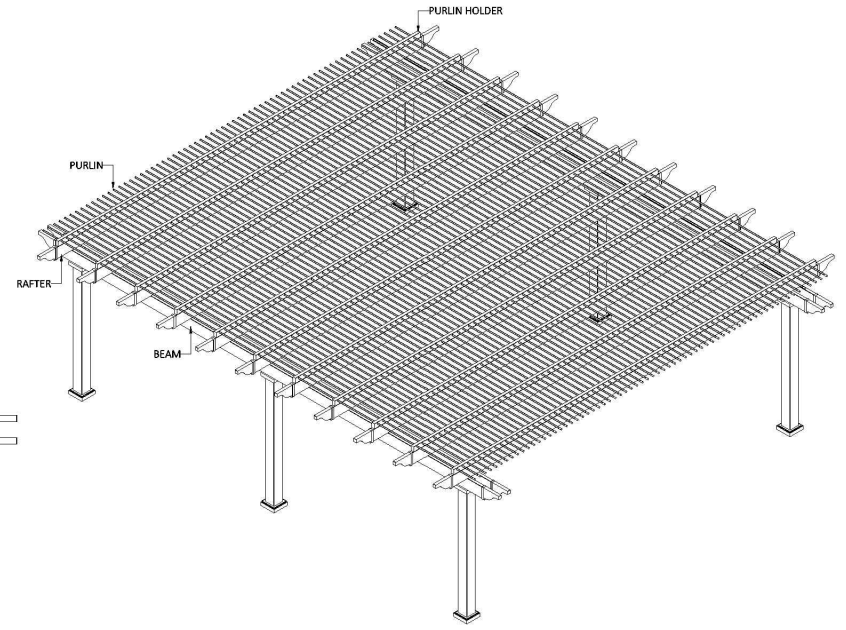
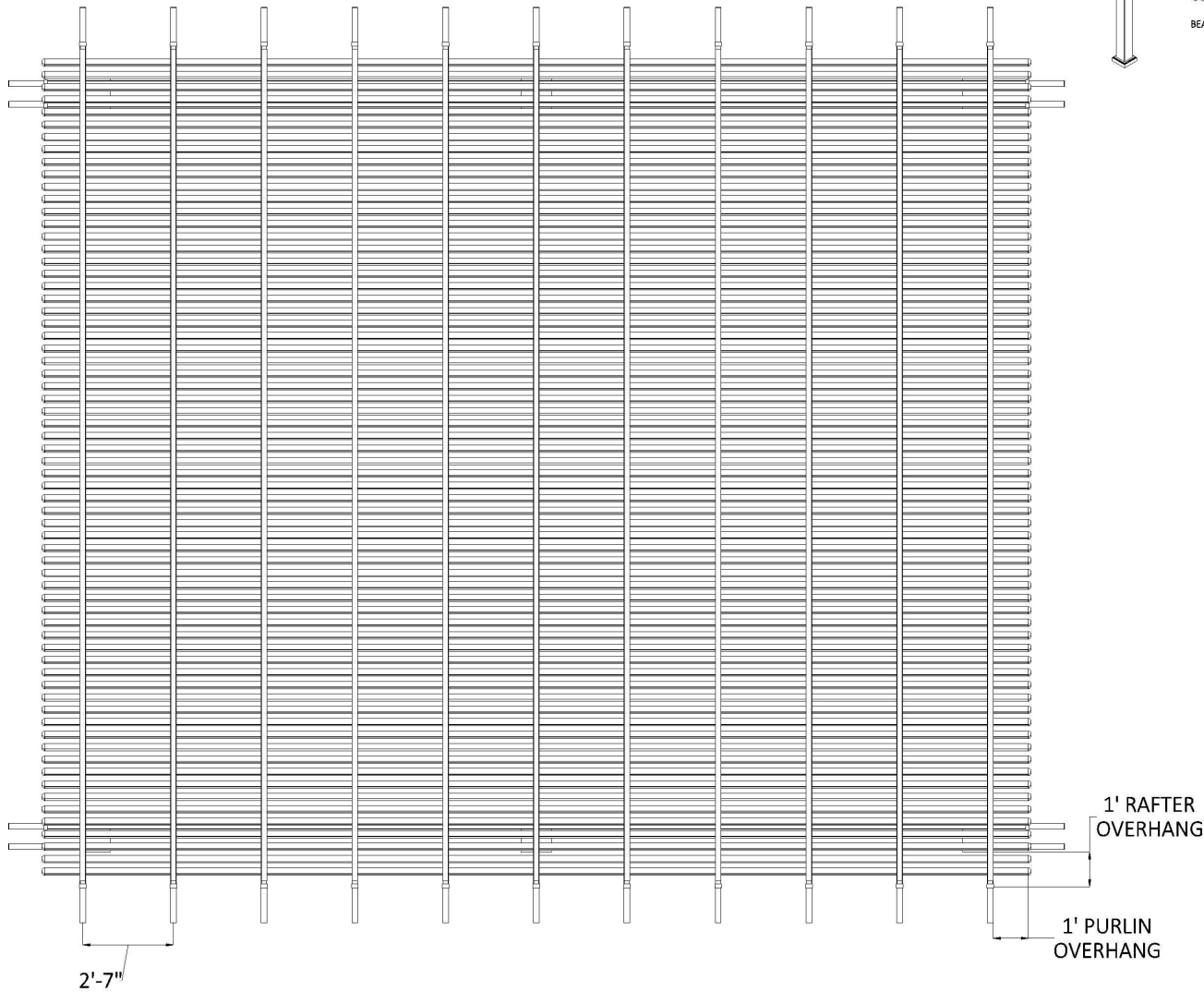
POST ON CENTER MEASUREMENT

| POST STYLE | INCHES |
|---------------------------------|---------|
| 5" Square Post (7" base) | 153 1/2 |
| 7" Square Column (10 1/2" base) | 150 3/4 |
| 7" Round Column (10 1/2" base) | 150 3/4 |
| 10" Round Column (12 1/4" base) | 149 7/8 |

POST ON CENTER MEASUREMENT

| POST STYLE | INCHES |
|---------------------------------|---------|
| 5" Square Post (7" base) | 259 |
| 7" Square Column (10 1/2" base) | 253 1/2 |
| 7" Round Column (10 1/2" base) | 253 1/2 |
| 10" Round Column (12 1/4" base) | 251 3/4 |

PLAN VIEW



KIT COMPONENTS

| DESCRIPTION | QUANTITY |
|---|----------|
| Your Selected Post with Aluminum Insert | 6 |
| 2 X 8 Beam with Aluminum Insert | 8 |
| 2 X 8 Rafter with Aluminum Insert | 11 |
| 2 X 8 Pergola Cap | 30 |
| 2 X 3 1/2 Purlin Holder | 11 |
| 2 X 3 1/2 Flat Cap | 22 |
| 7/8 X 3 Purlin (75% Shade) | 70 |
| 7/8 X 3 Purlin Cap | 140 |

24' x 28' FREESTANDING PERGOLA

Heartlandpergolas.com

563-345-6745

